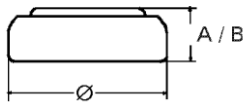


## Data Sheet

**Type Number** ..... 20341  
**Designation IEC** ..... SR 714 SW  
**System** ..... Silver oxide / Zinc /  
 Alkaline - Electrolyte



**Nominal Voltage** ..... 1,55 V  
**Typical Capacity C** ..... 15 mAh  
 Load 68,1 kOhm, at 20°C down to 1.2 V

**Weight (approx.)** ..... 0,28 g  
**Volume** ..... 0,07 ccm  
**Coding**..... Date of Manufacturing  
 Month / Year

**Temperature Ranges** min max.  
 Storage ..... 0°C 60°C  
 Discharge ..... 0°C 60°C

**Dimensions** min max.  
 Diameter (Ø)..... 7,75 7,90  
 Height (A/B) ..... 1,3 1,45

**Segment** ..... Watch

**Main Applications** ..... Watch  
 Photo  
 Electronic Devices

### Typical Capacities (at 20°C)

Discharge Type	Load	End Voltage:	1.2 V
Continuous 24h/d,7d/w Current [µA]:	68100 Ω  23	Time:	650 h
		Capacity [mAh]:	15
		Energy [mWh]:	23,5